

Society related database elements

Purpose

The data-schema elements in this part of the KKSys allow management of data relating to **Societies** and **Zones**. Each of these entities is linked to a set of child-entities: **Society Evaluations, District Elections, District Elections, Society Activites, Projects, Society Elections and Regions**. These child-entities enable the recording of many aspects of data that are required for the day-to-day operation of Kuapa Kokoo.

These entities exist to answer questions such as:

- How many Zones does KKFU work with?
- How many of these Zones are active, new or inactive?
- What Elections, Evaluations and Projects have been done with the Zones and Societies?
- For the most recent Elections, which Farmers were elected and are now Chair, treasurer, secretary etc.?

Through Links from these entities to other parts of the database it is possible to answer questions like:

- How many farmers are members of each Society or Zone?
- Have farmers in this Society or Zone paid their membership fees/dues and received their membership Bonus?
- How many bags of cocoa have been delivered by each Society or Zone?

These are only example questions, and many other types of questions can be answered, including questions relating to issues such as how the data changes over time, whether Zones or Societies are growing or shrinking etc.

Examples which show how to generate the answers to the above questions are included in the individual sections of help listed below.

It is important to remember that some data-schema elements are used much more fully than others. For example, up to 2023 the "SocietyActivities" data-entity has not been used at all. Also, some of the data-entites are somewhat poorly designed due to the historical factors. For example the existance of separate entities for "Society Elections" and "District Elections", and the way the "Regions" entity is used could and should be changed and improved in the future. There is really no need for 2 "Elections" entities, and the "Regions" entity is confusing and poorly used. It is possible in the future that the "SocietyActivities" data-entity might start to be used, or be dropped altogether, and that the two Elections entities might be merged together. If changes are made to these entities in KKSys, the changes will be visible within the [System Database Modeller](#) .

Some data-entities (such as "Projects") had a period of use by KKFU staff, and have fallen into disuse. Staff at KKFU should review these entities and decide whether to use them or not in future. These under-used and unused entities all have the capacity to serve useful functions within KKFU.

The use and purpose of each of these entities and the child-entities are detailed in individual sections of this help document below, please go to the linked articles for detailed, step by step description of each data-entity

[1. Societies and Zones](#)

[2. District Elections](#)

[3. Society Elections](#)

[4. Society Evaluations](#)

[5. Society Activites](#)

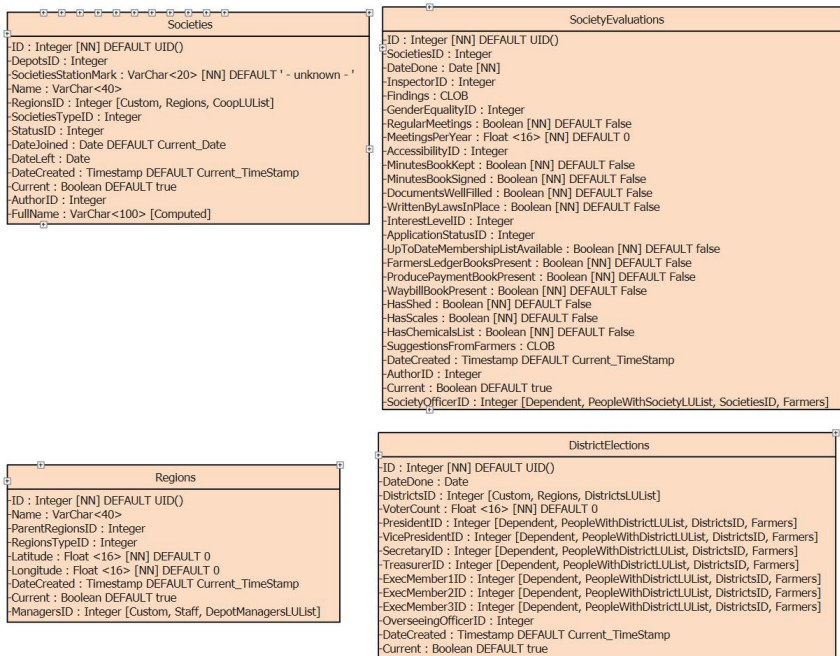
[6. Projects](#)

Elements of the Society related sections of the database

The KKSys is a single, whole database. The Society related sections are not separate from the sections managing Farmer, Questionnaire or Audit data. The sections have been separated in this help document to make it easier to understand them and get a sense of their inter-relationships and purpose, but the data exists as a whole and all parts of it can be accessed at any time.

Societies, Society Evaluations, District Elections and Regions

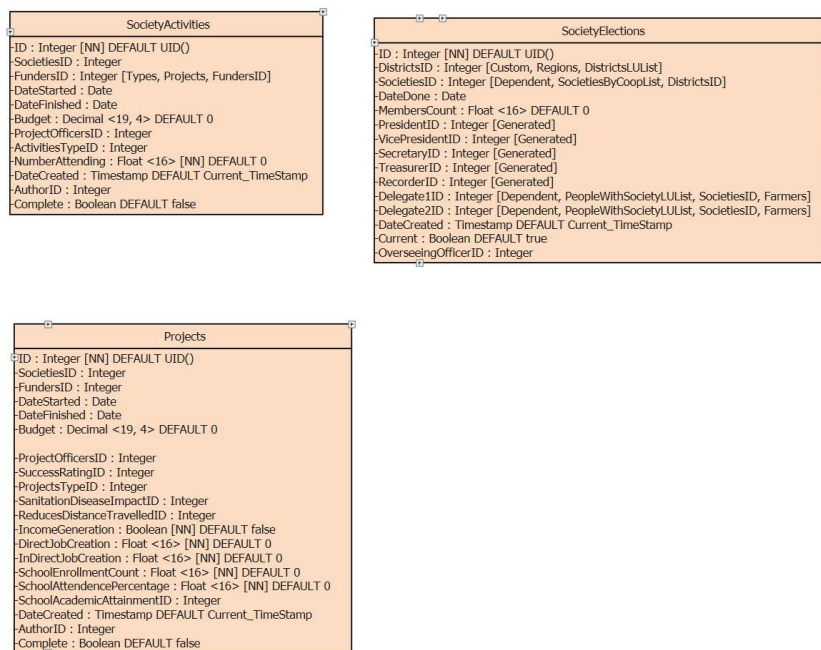
The image below shows each of these data-entities and lists all the **data-fields** present in each one, with it's **data-type**. These images give an overview of the data-entities which is fully detailed in the individual linked sections listed above.



Societies, SocietyEvaluations, DistrictElections, Regions

Society Activites, Projects, Society Elections

The image below shows each of these data-entities and lists all the **data-fields** present in each one, with it's **data-type**. These images give an overview of the data-entities which is fully detailed in the individual linked sections listed above.



SocietyActivities, Projects, SocietyElections